

User Manual

1. Product Description

As the core equipment of smart home control system, intelligent gateway provides intelligent solutions for integrated control on security and home appliances by combining Internet technology, ZigBee bi-directional RF communication technology and RS485 bus communication technology, which gives you a safe, comfortable and convenient home environment. With smart home system formed by intelligent gateway, the user not only can has centralized control on home appliances via the smartphone or tablet PC, but also set different scene modes for switching and controlling by one key. In addition, the system's logic control function enables the user to set a variety of logics to complete logic control at specified time and condition. When going out, the user can use smartphone or tablet PC to check and control home appliances such as lighting, curtain and air conditioner anytime and anywhere to enjoy the feeling that "home is always by your side".

1

2. Feature

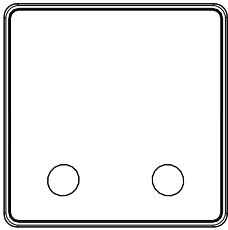
- ◇Local and remote control on the equipment
- ◇Scene linkage
- ◇Security linkage
- ◇Fingerprint unlocking linkage
- ◇Password unlocking linkage
- ◇Temporary password authorization
- ◇Push notification of unlocking and alarm message

3. Main Parameters

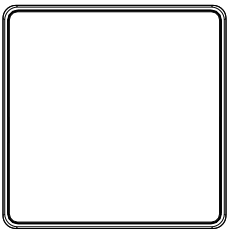
- ◇Working Voltage: 5V(USB) or 12V (BUS)
- ◇Quiescent Current: 200mA(5V) or 100mA(12V)(Thin Type)
250mA(5V) or 130mA(12V)(Thick Type)
- ◇Working Temperature: - 10℃～ +55℃
- ◇Working Humidity: 10%～ 90%RH (Noncondensing)
- ◇Size: 86x86x28mm(Thin Type)
86x86x39mm(Thick Type)
- ◇Installation: Desktop or wall-mounted installation

2

4. Appearance (The following pictures are only sketches. Please see real product for details.)

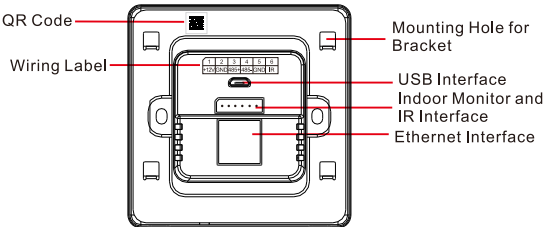


Front view of gateway with display



Front view of gateway without display

3



Rear View

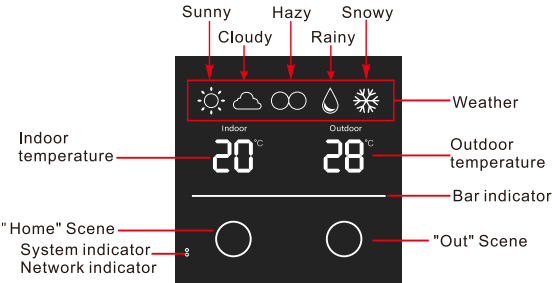
Interface Explanation:

1. USB Interface: Supply power for intelligent gateway;
2. Indoor Monitor Interface:
Order (→): +12V, GND, 485+, 485-, GND, IR;
GND and IR: Reserved interfaces;
485- and 485+: RS485 interface for connection with indoor monitor.
If the device is wall mounted, +12V and GND are used to supply the power.
3. Ethernet Interface: Network cable connection for remote control.

4

5. Gateway interface (Please see real product for details.)

1. Gateway interface with display:



5

Weather and temperature display:

- Connect the Ethernet port of the intelligent gateway to the network, and ensure that the network can access the Internet normally. The intelligent gateway will automatically obtain the outdoor temperature and current weather information through the network, and update the outdoor temperature and current weather information every hour.
- The intelligent gateway detects and displays the indoor temperature in real time through the built-in temperature detection device.
- **Note:** when obtaining and displaying weather / outdoor temperature, the network connection must be ensured, otherwise the current weather information cannot be displayed, and the outdoor temperature will display "00".

Home / out scene control

- In standby mode, press the left key on the intelligent gateway panel to trigger the home scene mode immediately;
- In standby mode, press the right key on the intelligent gateway panel to trigger the out scene mode immediately;

Temperature calibration function

- Keep pressing any key on the intelligent gateway panel for 5 seconds, the indoor temperature data will flash, and automatically enter the calibration function state. At this time, the scene key function is invalid;
- Click the left key on the intelligent gateway panel to increase the indoor temperature value;
- Click the right key on the intelligent gateway panel to decrease the indoor temperature value;

6

- When the set temperature is consistent with the standard temperature, long press any key on the intelligent gateway panel for 5 seconds to exit the calibration function state automatically;
If there is no key operation for 15 seconds, it can also exit the calibration function state automatically.

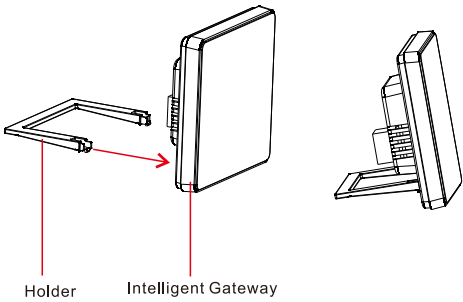
2. Status of Indicator Light

Gateway	Light	Color	Indicating Method
Gateway with display	Bar Indicator	Yellow/ Green	It flashes when the gateway is searching for other ZigBee devices to add or when the key is pressed.
	System LED Indicator	Green	1.In standby mode, green LED is on. 2.If network isn't connected, green LED flashes slowly.
	Network LED Indicator	Blue	Blue LED flashes during Zigbee data communication.
Gateway without display	System LED Indicator	Green	1.In standby mode, green LED is on. 2.If network isn't connected, green LED flashes slowly.
	Network LED Indicator	Blue	Blue LED flashes during Zigbee data communication.

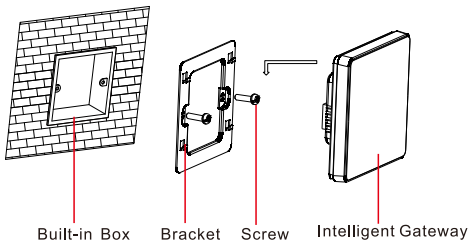
7

6. Installation

(1) Desktop



(2) Wall-mounted Installation



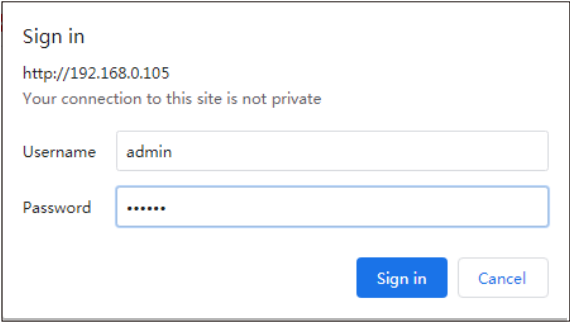
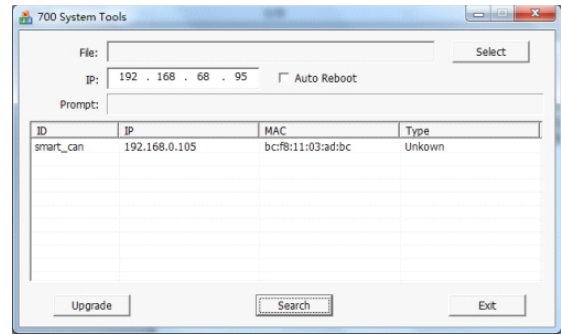
- Fix the bracket to the box with the screws.
- Plug indoor monitor connector into indoor monitor interface on the back of intelligent gateway, and plug network cable connector into Ethernet interface on the back of gateway.
- Buckle the back of intelligent gateway into the bracket and pull it down to hang the gateway on the wall.

Notes:
1.Please make sure that power is off during installation.
2.Please check the interface is correct before connecting indoor monitor.

7. Operation

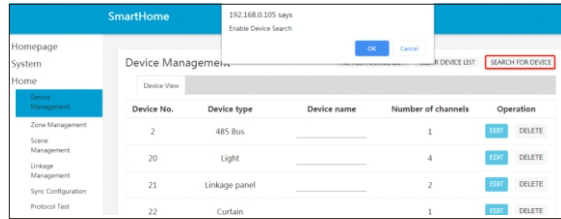
(1) Sign in

Connect the computer and the gateway to the same router. Enable DHCP on the gateway by default. Using remote upgrade tool on the computer, you can find the dynamic IP address of the gateway. Open Google Chrome on your computer, enter the IP address of the gateway in the address bar, and then press Enter. Input the username "admin" and password "123456" to log in to the setting page of this gateway.



(2) Enter ZigBee search status

Log in to the website, click "SEARCH FOR DEVICE" in the top right corner of Home-Device Management page and confirm that the gateway will enter ZigBee search status. The gateway will search for the pairable ZigBee device and add it to the device list.



(3) Restore factory settings

Log in to the gateway's setting page, click Reset button in System-Reset and confirm. The gateway can be restored to factory settings. You can also open the back cover of the gateway and press the set button for 5 seconds to restore the factory settings.

! Notes

- Please make sure that the power is off during instllation or maintenance.
- The installation of the equipment must be used within the allowable power range.
- Please follow the manual for wiring and installation.
- Photos are for refarence only. Goods in kind prevail.
- In case of product technology or software upgrade, without prior notice

